



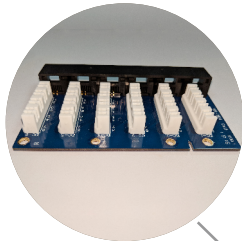
DIGISOL[™]
CONVERGEX
 ENTERPRISE SCS

SOLDERLESS PATCH PANEL, 24 PORT, CAT 6, UTP, 90° DGC-PP6U2L-1B-SL

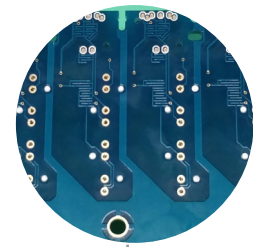
**CAT6 patch panel with
 CAT6A performance**



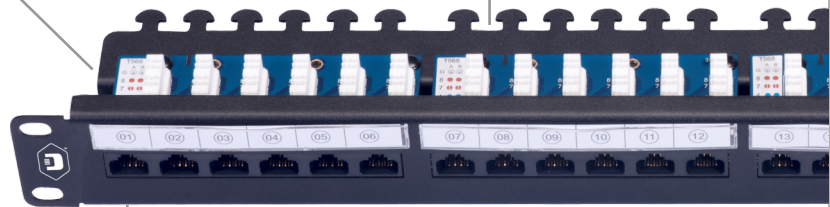
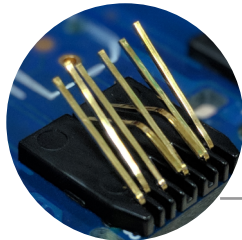
Top Entry
 Punch Down
 design with
 Removable
 Modules



Contact pins
 assembled on
 Patented
 PCBs by
 SOLDER-LESS
 PRESS-FIT
 PROCESS



FULLY
 GOLD PLATED
 Contact pins



Key Features :-

- Contacts pins and IDC mountings assembled in **Patented PCBs** by Solder-less Press-fit process
- **No oxidization** of Contact pins due to absence of soldering flux leading to longer life
- **Fully (360 degree covered) 30 microns Gold plated** Contact pins, for better for PoE Application.
- Higher flexibility of **square pins** used here instead of the single side Gold Plated stamped pins used by other brands
- 6 Port Jack configuration specially designed & molded in **ABS Fire retardant material**.
- **90 Degree Punch-Down design** for easy assembly on site.
- Exceeds ANSI/TIA-568-C.2 standard, and supports 1000-BASE-T
- IDC Accommodates **22~26 AWG** Stranded and Solid wires.
- Plug Insertion Life : >= 750 Cycles with FCC Compliant RJ-45 Plug

Standard Verification:-

- ANSI/TIA-568-C.2
- ISO/IEC 11801:2002/AMMD.2:2010
- YD/T 926.3-2009
- ISO/IEC 60603-7 Compliant
- RoHS Directive 2002/95/EC/Compliant
- UL Listed, ETL Verified
- Qualified Class E / Cat.6 Permanent Link & Channel



www.digisol.com/convergex

✉ enterprisesales@digisol.com ☎ 1800 209 3444