

**IMAGINE HAVING  
FUTURE READY  
ENTERPRISE**

**IMAGINE HAVING  
FUTURE READY  
ENTERPRISE**

INTRODUCING



**DIGISOL**<sup>TM</sup>

**CONVERGEX**

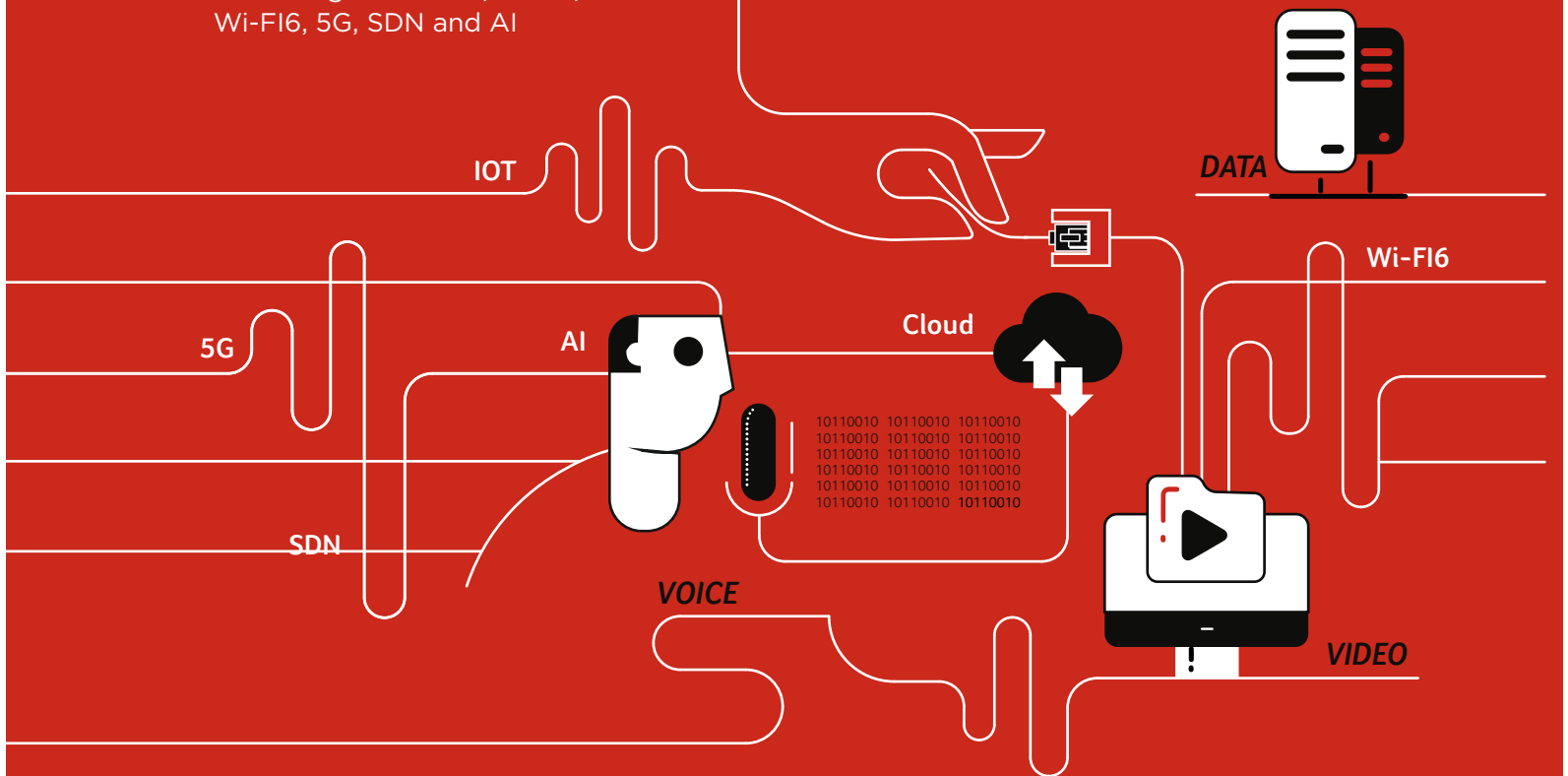
ENTERPRISE SCS

FOR FUTURE READY  
ENTERPRISES



# VOICE VIDEO DATA

A future ready enterprise is equipped with a structured cabling infrastructure that converges voice, video, data at Xtreme performance for cutting edge, advanced technologies like IOT, Cloud, Wi-Fi6, 5G, SDN and AI



# Structured Cabling

## DNA of your IT Network Infrastructure

In today's digital world where high bandwidth connectivity & security is an important factor for businesses, having a well designed structured cabling system in place is very crucial. However, many organizations, hospitals, schools, colleges, banks, corporate parks, large format retail (LFR) stores and government campuses usually overlook the most vital element - Structured Cabling, while implementing technology. A well designed Enterprise Structured Cabling System acts as the backbone that provides trouble-free & consistent business operations, increases efficiency, optimizes scalability and accelerates return on investment at an Xtreme speed and performance.

Keeping pace with the evolving technological advancements, Digisol provides top notch Enterprise structured cabling solutions under ConvergeX that supports your IT infrastructure for present and next generation data communication services, applications and technologies like IOT, Cloud, Wi-Fi6,5G,SDNandAI.

**ConvergeX offerings include end-to-end Enterprise structured solutions like high quality Solderless & Toolless Keystones, Solderless and Staggered Patch Panels, Patch Cords, Industrial Field Plugs and Data Centre Structured Cabling components which are PoE+ compliant as well!!**

All products are  &  certified products.  
Intertek

**THINK ENTERPRISE. THINK DIGISOL!**



**DIGISOL**<sup>™</sup>  
**CONVERGEX**  
ENTERPRISE SCS

**IS HERE TO MAKE  
FUTURE READY ENTERPRISES  
WITH NEW AGE STRUCTURED  
CABLING SYSTEMS**

# The Digisol ConvergeX offerings are here to upgrade the IT Networking infrastructure of :-

---



SMART CITIES



MANUFACTURING



HEALTHCARE



TELECOM



REAL ESTATE



EDUCATION



BANKING



HOSPITALITY



RETAIL



DATA CENTERS



SURVEILLANCE



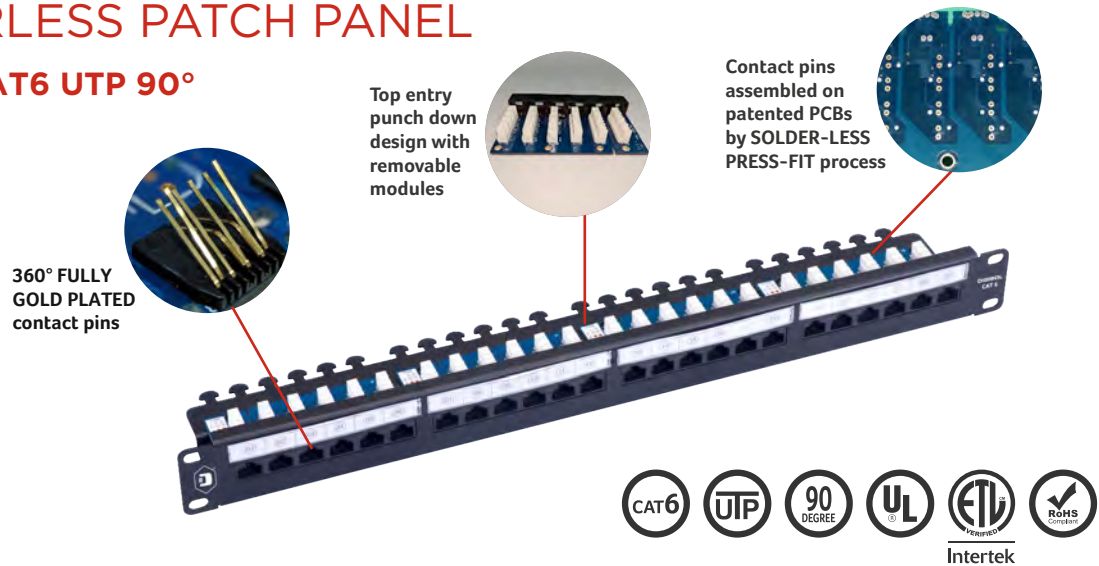
IT/ITES

# COPPER

## PATCH PANEL

### SOLDERLESS PATCH PANEL

#### 24 PORT CAT6 UTP 90°



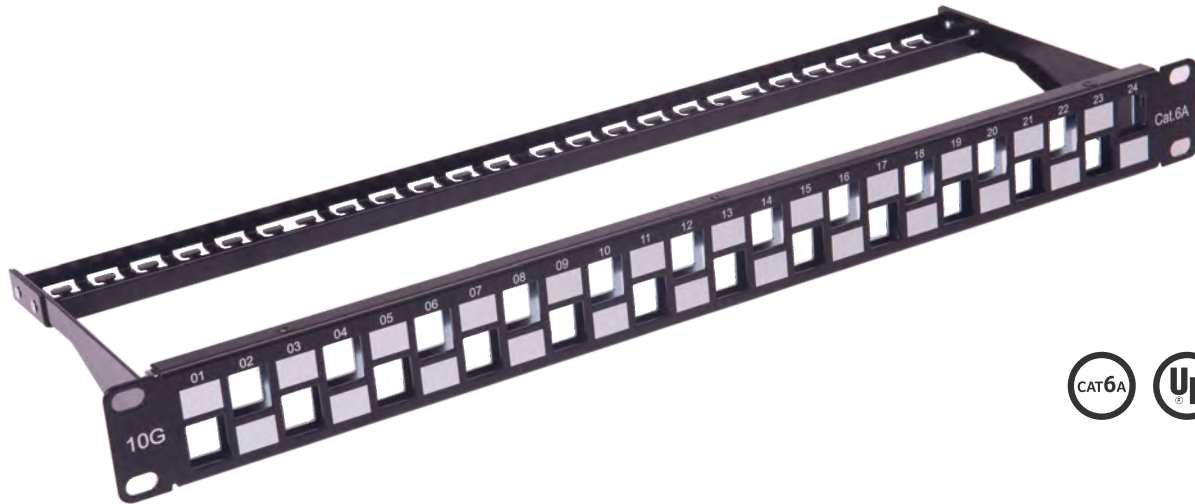
- CAT6A performance with CAT6 patch panel
- Contacts pins assembled in Patented PCBs by Solder-less process leading to higher efficiency
- Flexible Square Contact pins, with 360 degree covered in 30 microns Gold plating, better for POE Application
- IDC accommodates 22-26 AWG Stranded and Solid wires.
- No oxidization of contact pins due to absence of soldering flux leading to longer life
- Higher performance with better transmission at electron level
- 6 Port Jack configuration specially designed & molded in Polycarbonate Fire retardant material and Removable Module Design
- 90 Degree Punch-Down design for easy assembly on site
- Exceeds ANSI/TIA/EIA-568-C.2 standard, and supports 1000-BASE-T
- 1U Patch Panel to mount In any Standard Rack



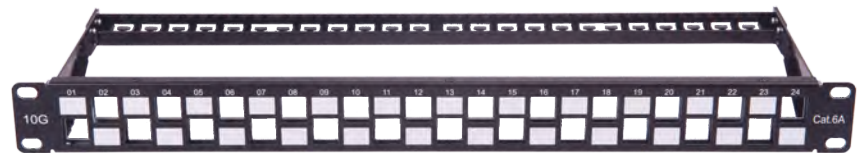


# STAGGERED PATCH PANEL

## 24 PORT CAT6 UTP 90°



Intertek

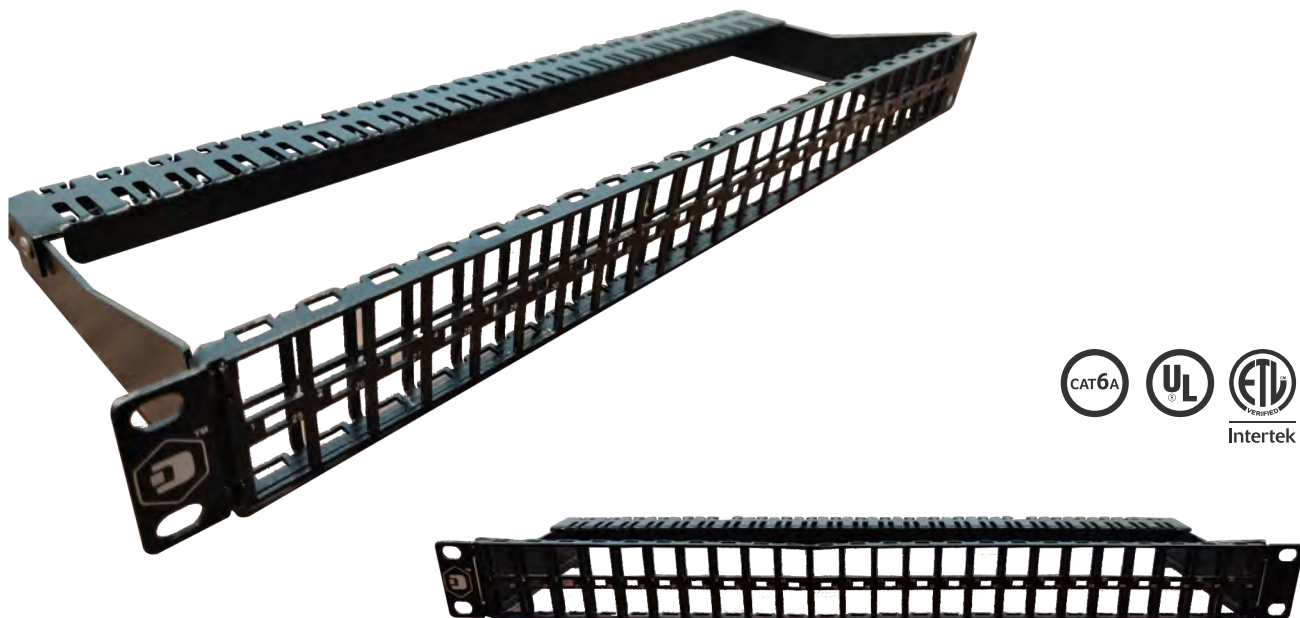


- Staggered ports for CAT6A patch panel to eliminate alien crosstalk
- Aluminium body
- Efficient Cable management
- Ideal patch panel for high end Data Centre infrastructure



# 48 PORT 1U PATCH PANEL

## CAT 6A 48 PORT 1U UTP (LOADED)



- 48 Port terminations in 1U Size
- Rack Mountable MS Steel body
- Efficient Rear Cable Management.
- Perfect Solution for High Density Data Centre Applications.



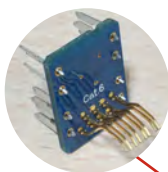
# KEYSTONES

## SOLDERLESS KEYSTONES

### CAT6 UTP SOLDERLESS KEYSTONE TOOLLESS



Contact pins assembled by SOLDER-LESS PRESS-FIT PROCESS



Toolless Termination with just a click!



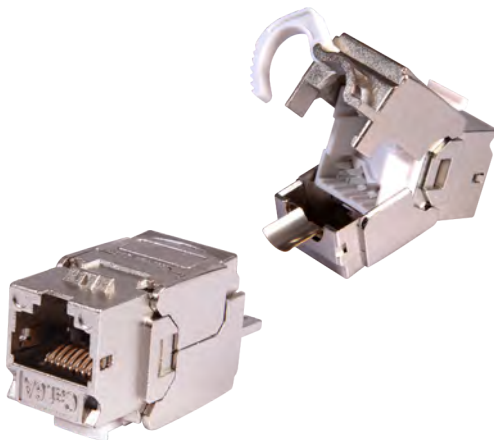
360° FULLY GOLD PLATED Contact pins



- Fully (360 degree) covered in 30 microns Gold plated Contact pins which are assembled with
- Solderless process
- Cable Holder with Strain Relief function Fast, Easy, Reliable Termination
- Patented Toolless type design with contact pins assembled with Solder-less Press-fit process
- No oxidization of Contact pins due to absence of soldering flux leading to longer life
- High impact Polycarbonate Grade plastic, UL-94V-O rated
- Removable shutter option
- Supports both RJ11/RJ12 plug
- Plug Insertion Life : 750 Cycles minimum
- Available in Cat 5E, CAT 6 and CAT 6A

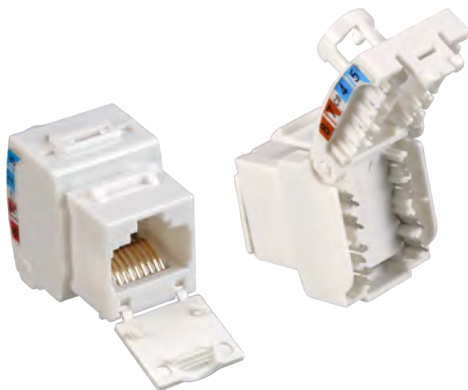


## TOOLLESS CLASS EA/ CAT.6A STP KEYSTONE JACK (AUTO PRESS FIT)



- RJ-45 Industrial Field plugs for field terminations
- CAT6A rated
- 360 degrees connection option available
- 8 different locking angle positions possible along the 360 degree path
- High impact flame retardant plastic
- PoE+ ready
- Accept Cable : #26-22 AWG solid / 7 stranded wire

## TOOLLESS CLASS EA/ CAT.6A UTP KEYSTONE JACK (AUTO PRESS FIT)



- RJ-45 Industrial Field plugs for field terminations
- CAT6A rated
- 360 degrees connection option available
- 8 different locking angle positions possible along the 360 degree path
- High impact flame retardant plastic
- PoE+ ready
- Accept Cable : #26-22 AWG solid / 7 stranded wire

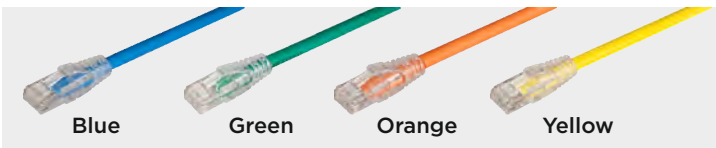


# PATCH CORDS



## CAT6 UTP, LSZH PATCH CORDS

- Available in LSZH jacket- reduces Toxic gasses emitted during combustion
- RJ45, 8P8C, 3 pronged fork 50µ" gold plated contacts
- 100% factory tested
- Transparent boot cable assemblies
- Available in 5 different colors



## LOCKABLE PATCH CORDS, CAT6, UTP, LSZH



- Comes with lock and key design for data centre security needs
- 24 AWG
- UL & ETL verified
- LSZH jacket
- 50 micron gold plated RJ45 contact pins





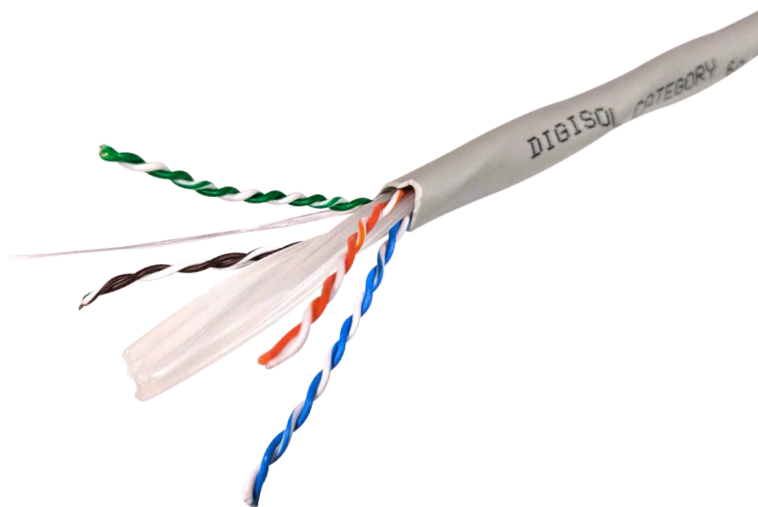
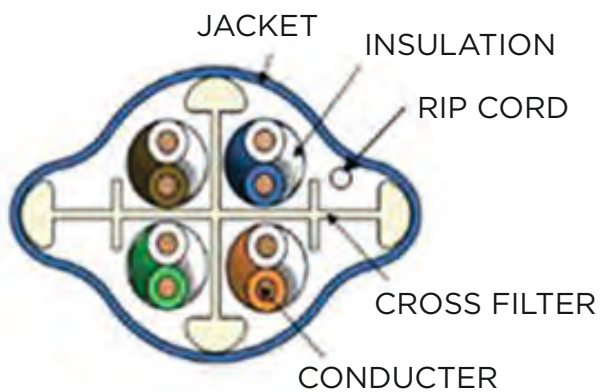
## ULTRA HD PATCH CORDS

- UHD Patchcords with Pull-Back Tool
- Arrests data disconnections in high density patch panels due to mishandling.
- Patchcord Jacket is of LSZH material
- Fully (360 deg) plating on Contacts with 50 micron gold for best conductivity performance
- Suitable for Data Centre applications.



# SOLID CABLES

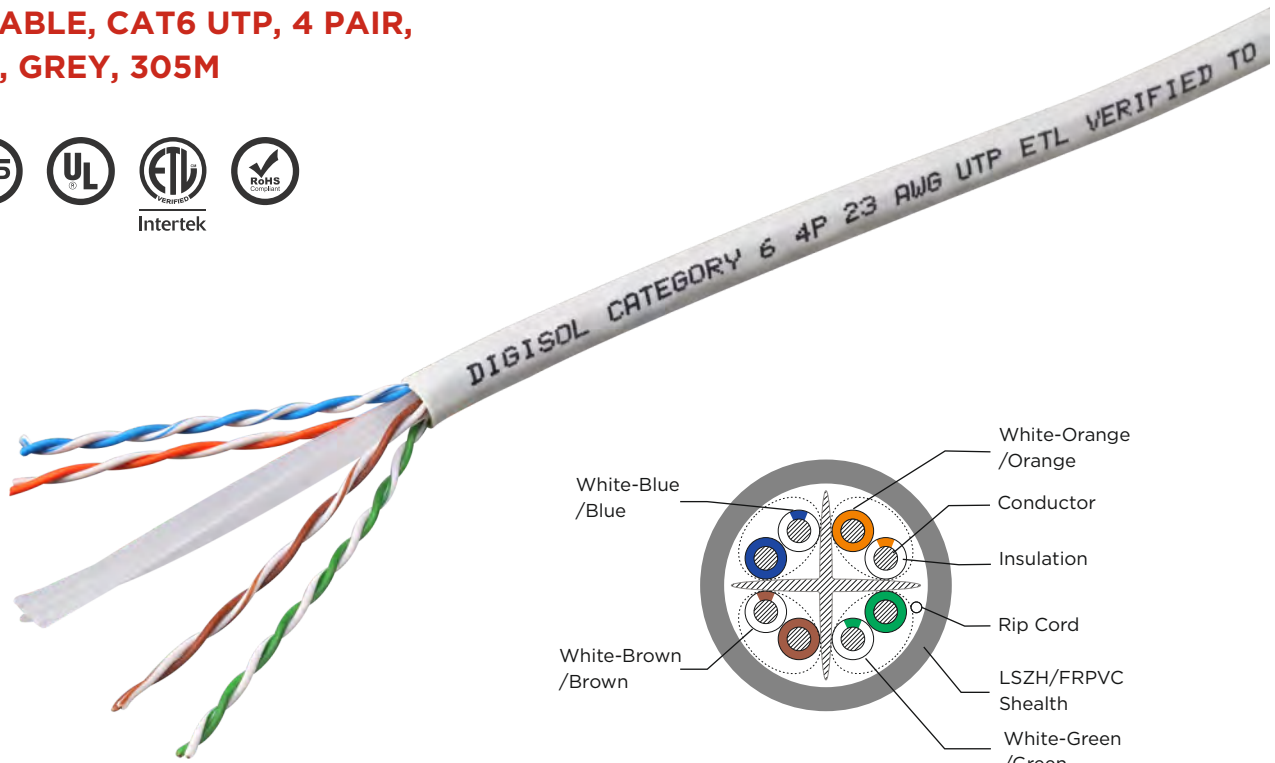
**SOLID CABLE, CAT6A UTP, 4 PAIR, 23 AWG, OVAL SHAPE, GREY, 305M**



- Designed for Horizontal
- Cabling Networks for Transmission of High Speed Data, Digital and Analog, Voice and Video Signals On Lans.
- Supports Gigabit Ethernet (10 GBase-T) Standard
- Suitable for Noisy Environments, High EMI Interference Surroundings
- Complies to the Requirement of ANSI/TIA-568-C.2 and ISO/IEC 11801.
- Bandwidth Performance Upto 600MHz
- UL Listed and ETL Verified.



**SOLID CABLE, CAT6 UTP, 4 PAIR,  
0.55 MM, GREY, 305M**



- For Data Centre Applications
- High bandwidth upto 600 MHz
- 4 Pair 23 AWG
- Available in FRPVC/LSZH jacket
- High speed transmission of Voice, Video and Data on LAN
- Also available in Blue colour
- Made in India





# INDUSTRIAL FIELD PLUGS

- Direct connectivity from switch to the end user's device
- PoE+ compliant
- Toolless termination
- Solderless Process used for assembly fo pins on PCBs leading to longer life and no oxidation due to absent flux



For DGC-RJFSCA-7TC industrial field plug, no cable manager is needed - patch cords can be routed in the design itself due to 8 different lockable positions

## DGC-RJFUCA-3T INDUSTRIAL FIELD PLUGS CAT 6 UTP, 3 PIECE, 180°, TOOLLESS, POE+



## DGC-RJFSCA-5T INDUSTRIAL FIELD PLUGS CAT 6A STP, 5 PIECE, 180°, TOOLLESS, POE+

## DGC-RJFSCA-7TC INDUSTRIAL FIELD PLUGS CAT 6A STP, 7 PIECE, 360°, TOOLLESS, POE+



# FIBER

## LIUS



### COMPACT LIU

- Sleek and compact design
- Lightweight aluminium body
- Wall mount and DIN-Rail design
- Available in lock and key as a standard design feature
- Ideal solutions for telecom market customers such as ISPs, MSOs and System Integrators



### 12 PORT LIU

- Customized requirements for 12 ports addressed
- Sleek and compact design
- Lightweight aluminium body
- Wall mount design and DIN-rail design
- Perfect for FTTH solution needs



# INDUSTRIAL PRODUCTS

## IP RATED PATCH CORDS

- Available in Patchcords, Keystones and Cable Termination Modules
- IP Rated products
- Preferable for Field Applications where external factors are in force
- Also compliant for Chemical industries.



## IP RATED KEYSTONES

- Available in Patchcords, Keystones and Cable Termination Modules
- IP Rated products
- Preferable for Field Applications where external factors are in force
- Also compliant for Chemical industries.





**3 DECADES OF  
BRINGING THE  
WORLD CLOSER.**

# ABOUT DIGISOL

---

Digisol brand is one of the leading IT networking brands of India founded by Mr. K R Naik who is fondly known as the father of the Indian IT Networking Industry. In today's digital world where high bandwidth connectivity and security is an important factor for businesses, having a well-designed IT Infrastructure system in place is very crucial. Digisol understands these IT networking needs in depth and offers IT networking solutions which includes Structure Cabling Systems, FTTH Solutions, Switching Solutions and Wireless Solutions. Thus, we proudly say that Digisol offers end to end networking products and solutions portfolio which caters to all IT networking needs.

Digisol is a brand of Digisol Systems Ltd which is a wholly owned subsidiary of Smartlink HoldingsLtd., a BSE I NSE listed company, know to be a pioneer in the Indian IT Networking industry for almost three decades now.

# THE KEY OFFERINGS FROM DIGISOL INCLUDE :-

---

## STRUCTURED CABLING

- **COPPER CABLING** : CAT 6 Solid Cable, Keystone, UTP/STP Patch Panel, Patch Cord, Face Plate, Back box
- **FIBER CABLING** : Fiber Optic Cable, Fiber Patch Cord, Pigtail, LIU, Adapter



## FTTH SOLUTIONS

- **FTTH (ACTIVE SOLUTIONS)** : GEAPON, ONU and OLT and GPON, ONU and OLT
- **FTTH CABLING** : SMC, ODF, Splitter, FDB, Drop Cable, Field Termination Box



## SWITCHING SOLUTIONS

- **MANAGED** : Smart PoE Managed, Fully Managed & Chassis Switches
- **UNMANAGED** : Unmanaged & PoE Unmanaged Switches
- **INDUSTRIAL SWITCHES** : Managed & Unmanaged Switches



## WIRELESS SOLUTIONS

- **ACCESS POINTS** : Ceiling Mount, Indoor/Outdoor Access Points
- **ACCESS POINTS CONTROLLERS**





## **DIGISOL SYSTEMS LIMITED**

A Subsidiary of Smartlink Holdings Limited

### **HEAD OFFICE :**


215 Atrium Bldg., 2nd Floor, B-Wing, Courtyard Marriott Compound,  
Andheri-Kurla Road, Andheri (East), Mumbai - 400 093.

Tel. : +91 22 4938 6666

[enterprisesales@digisol.com](mailto:enterprisesales@digisol.com) • [www.digisol.com/convergex](http://www.digisol.com/convergex)



 @DIGISOLINDIA

 @digisol\_solutions

 @DIGISOL\_SNSL

 @DIGISOL SYSTEMS LIMITED